



S.CS UNIVERSAL – KP+

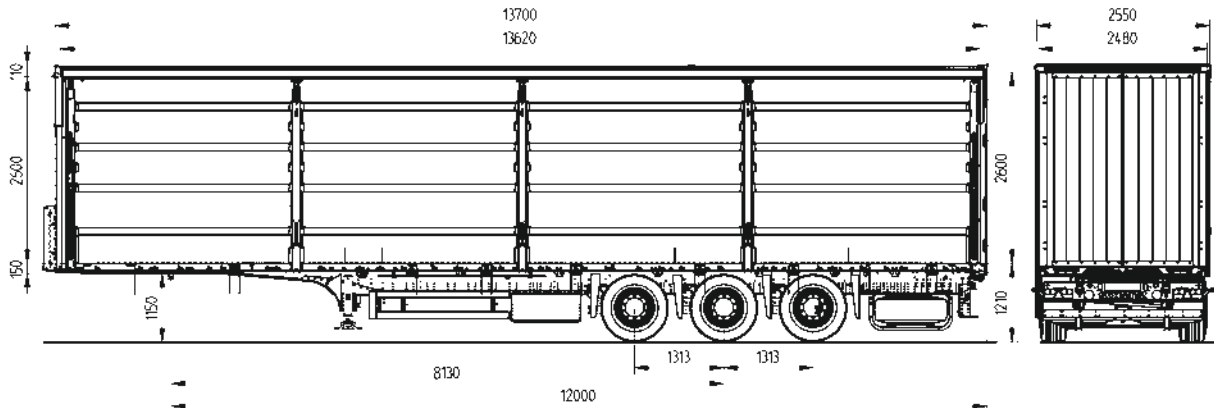
Cleverly done: Robust product solution for extreme conditions

The benefits at a glance:

- Reliable country-specific total weight of up to 50t
- MODULOS chassis with extra carrying capacity thanks to an increased distributed load with a roller-profiled full-length I-beam
- Weight-optimised selective reinforcement of the easy-to-repair galvanised chassis
- Wheelbase of 8,130 mm increases the trailer load for better traction on the drive axle
- Reinforced design for neck and kingpin for a trailer load of up to 18t
- Suitable for both 4x2 and 6x2/6x4 tractor units due to longer taper
- Combinable with all Schmitz Cargobull bodies
- Quicker loading and unloading times and simplified load securing with POWER CURTAIN* through omission of support laths
- Flexible system with numerous options for proper load securing
- Glued floor for longer service life, improved water tightness and a higher stacker axle load of 7.5 t
- ROTOS running gear with 1,000,000 km or six year warranty (excluding wearing parts)

Technical data

S.CS UNIVERSAL – KP+



Axles	3 x 9,000 kg
Track/spring centre	2,040 / 1,300 mm
Disc brake	Ø 430 mm
Axle spacing	1,310 / 1,310 mm
Wheelbase	8,130 mm
Tyres	385/65 R22.5"
Fifth wheel load (technical)	18,000 kg
Axle unit load (technical)	27,000 kg
Total weight (technical)***	42,000 kg
Empty weight*	6,490 kg

Payload (technical)	35,510 kg
Overall width	2,550 mm
Internal body length	13,620 mm
Internal body width	2,480 mm
Side loading height at front/rear	2,600 / 2,600 mm
Body height front / rear internal	2,680 / 2,680 mm
Frame height front / rear	150 / 428 + 28 mm
Fifth wheel height (unladen**)	1,150 mm
Rear loading height (unladen**)	1,210 mm

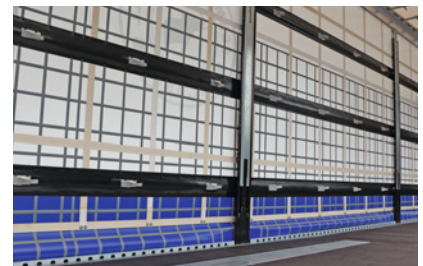
* Unladen weight without add. fittings.
 ** Other body heights are possible with different fifth wheel heights.
 *** Country-specific variations are possible.



Roller-profiled MODULOS chassis: Corrosion-resistant and repair-friendly design, thanks to bolted, hot galvanised technology.



ROTOS running gear: Efficient air cooling of the axle head reduces brake wear with continuous use.



POWER CURTAIN*: Body free from support laths for shorter loading and unloading times and greater operating safety.

* Optional.