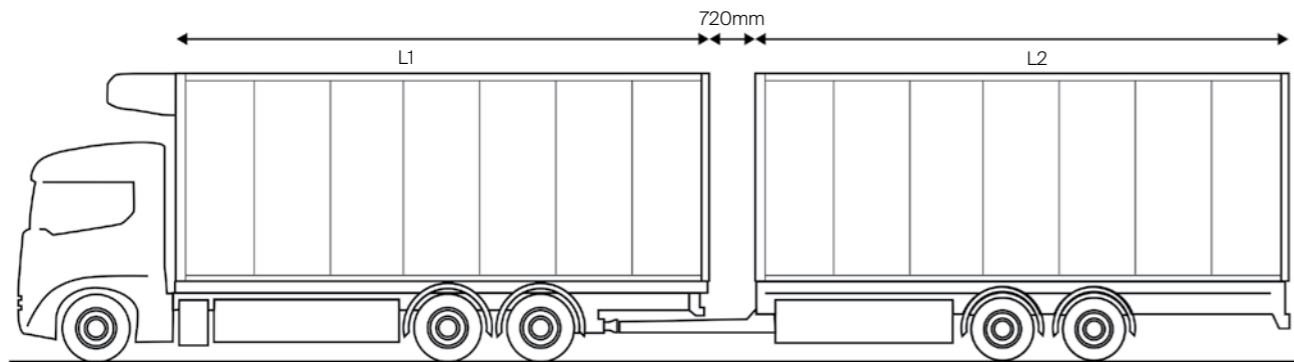


Technical Data

Motor vehicle box body M.KO and central axle box trailer Z.KO



M.KO (L1)	7,800mm	7,900 mm	8,250mm	8,000mm	7,300mm	8,150mm	8,150mm	7,850mm	7,850mm
Z.KO (L2)	7,450mm	7,400mm	7,100mm	6,600mm	7,300mm	7,100mm	7,300mm	7,450mm	7,500mm

Body length in the light (L1)	6,050mm bis 8,900mm	
Mounting height in the light (H)	up to 2,600mm	
Total height	up to 4,000mm	
Total width (B)	2,600mm	
Interior body width (BI)	FP 60: 2,460mm	FP 45: 2,490mm
Interior body width (BI)	ab 12,000kg	

One-Stop Solution Premium Services from Schmitz Cargobull



Subject to change without notice. Illustrations partly with optional equipment.

M.KO-FLY-DEGB-10554-3222

**SCHMITZ
CARGOBULL** 
The Trailer Company.



Box Body truck M.KO

Protects the tempered cargo - flexibly and comfortably fulfills the transport tasks

The advantages at a glance:

- FERROPLAST® bodies with high insulation capacity for temperature-controlled freight
- Proven safe on the road with the ATP-FRC certificate for temperature-controlled transport
- Numerous configurations with fixed and variable internals and sliding partitions made of FERROPLAST® for MultiTemp operation
- Weight-optimized, maintenance- and repair-friendly designs with a weight advantage of up to 60kg*.
- Extensive modular system for M.KO motor vehicles from 12t as well as A.KO trailers and Z.KO central axle trailers for flexible scheduling
- Through-loading train with central axle trailer Z.KO for complete loading and unloading without coupling manoeuvres
- Up to 37 Euro pallets in one level with optimal configuration of motor box M.KO with trailer Z.KO
- Simplified hygiene by welding aluminium floor and scuff rails to form a watertight tub
- Simplified maintenance and tested quality: many equipment options identical in construction to the S.KO semitrailer box
- Continuous forklift accessibility with 5.5t or 7.2 t floor load
- Fast, hygienic cleaning of the interior and internals

* Compared to the previous generation and depending on configuration and equipment.



Branded refrigeration units from leading manufacturers on the front wall or in underfloor design.



Ceiling-mounted auxiliary evaporator for MultiTemp versions and trailers in through-loading trains.



Roller shutter doors



Side door allows for partial unloading and separate access to individual MultiTemp cooling zones.



Transition in the through-loading train: End wall flap for trailer Z.KO is folded up as weather protection, folded up and distance adjusted with pneumatically locked, extendable drawbar.*



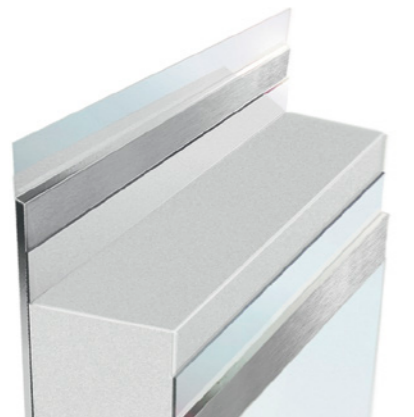
Dynamic Ramp Protection (DRP) and a double rubber strip protect the rear end when approaching the ramp.

M.KO/Z.KO-Through-loading train

Motor case and trailer with 37 pallet spaces

Superstructures made of FERROPLAST®

- Fast temperature adaptation
- Excellent, optimized insulating effect
- Smooth, buckling-resistant interior walls
- Durable value retention
- More safety during cold transport



FERROPLAST® structure with improved insulation

Concealed foamed ventilation ducts for the additional evaporator

Proven safe on the road with the ATP-FRC certificate

Branded cooling unit

Side collision protection

Long value retention due to stainless steel profiles in the subframe

Transition for quick loading and unloading without additional shunting and coupling

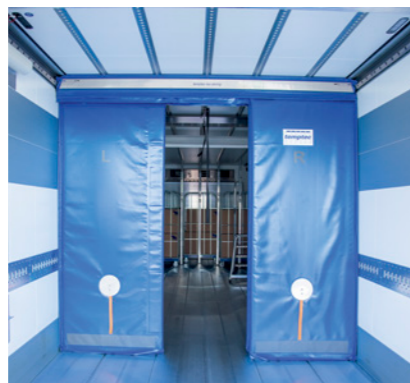
Tail lift enables unloading without ramp

Simplified repair due to modular design of the substructure

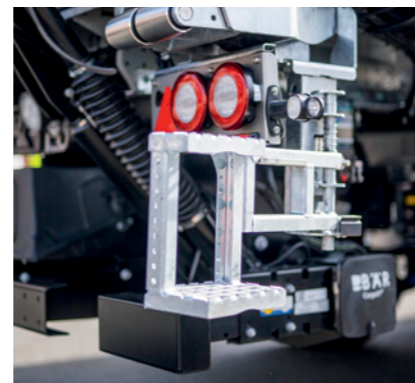
ROTOS chassis: 1 million km or 6 years warranty



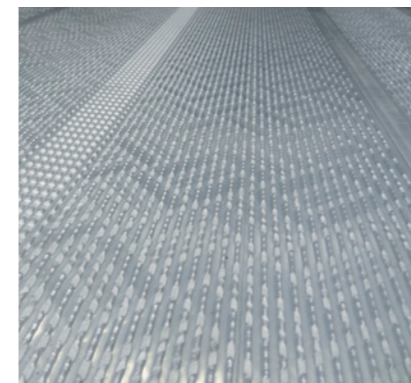
Sliding partition wall made of highly insulating FERROPLAST®: Fast, variable MultiTemp partitioning; optionally available for 1/3 and 2/3 partitioning or as a continuous wall.



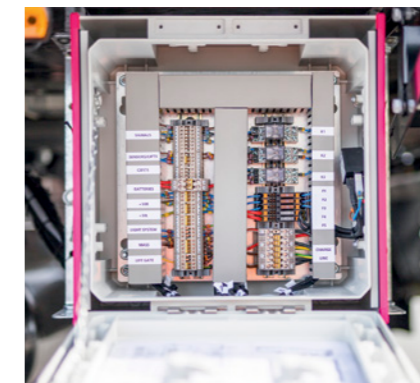
3-piece curtain, adjustable lengthwise and crosswise with magnetic holders on the top.



New folding ladder design coupled with SafeStart: when the ladder is folded out, the brake is activated at the same time. With two steps on both sides, it conveniently provides safe access to the vehicle.



Multifunctional floor with optimized slip resistance, easy load securing when fixing vertical telescopic beams as well as simplification of hygiene through faster cleaning.



Central control box, which ensures easy diagnosis and maintenance of the systems, ensures.



Airline rails in the ceiling and floor simplify load securing with vertical telescopic beams.

*optional