



The Trailer Company.



## M.KI Truck Tipper Body

Versatile in Road Construction, With Rounded Steel Body and Thermal Insulation

### The Benefits at a Glance:

- Payload-optimised thermal insulation for road construction
- Ideal for the transport of small quantities of asphalt
- Easy to maintain thanks to segmented design
- Standard four-point temperature measurement from the ground through side access points
- Optional preparation for electronic measuring technology
- Simple and quick opening and closing of the electric sliding tarpaulin by remote control
- Tipper bodies for all leading truck brands
- Torsion-resistant, galvanised subframe
- Application-specific tailgate solutions
- M.KI truck tipper body with low centre of gravity and high tipping stability thanks to the broad body floor
- Long service life, low maintenance requirements and high value retention





**Electric sliding tarpaulin:** temperature-resistant, and can be operated easily and quickly from the ground.



**Folding underride guard** for use with a road paver.



**Central slider:** with an external pendulum tailgate for controlled unloading (option).



**Internal pendulum tailgate** with chute for centred unloading.



**External pendulum tailgate** with rubber seal around the lip.



**Hydraulic tailgate:** ideal for abrasive, coarse bulk materials and controlled unloading.

## M.KI Truck Tipper Body With Rounded Steel Body and Thermal Insulation

The M.KI truck tipper body with a rounded steel body and thermal insulation in accordance with DIN 70001 provides optimised transport for small quantities of asphalt in road construction. The compact and manoeuvrable unit has a very robust body, yet still offers sufficient loading capacity to allow the transport of large quantities of abrasive bulk material such as sand, gravel or heavy rubble on return trips. This versatility is underlined by a practice-oriented selection of tailgates and accessories, the maintenance-friendly segmented insulation surfaces, as well as the future-oriented design of the access points.

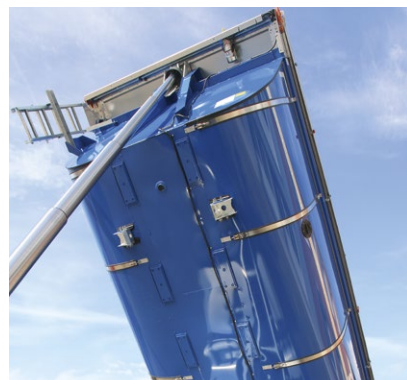
Folding underride guard



Maintenance-friendly insulation elements with low weight

Aluminium chequer plate cover for battery box and fuel tank

Aluminium chequer plate mudguard



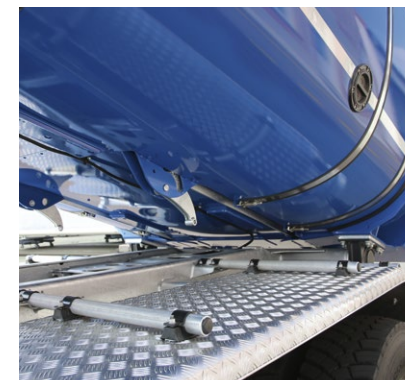
**Maintenance-friendly segmented design:** individual segments can be quickly replaced.



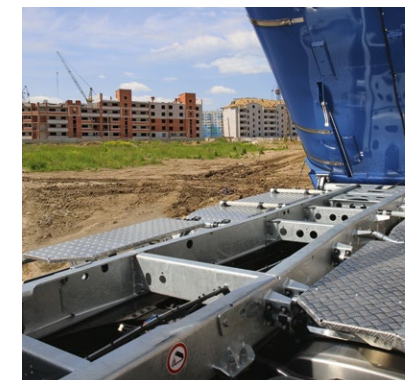
**Floating insulation panels** to compensate for temperature-related linear expansion.



**Future-proof: optional access points** for manual, direct temperature measurement and preparation for the installation of electronic measuring technology.



**Low centre of gravity** for better road holding and more tipping stability.



**The extremely torsion-resistant subframe** transforms the rigid truck and body into an extremely durable, safe and efficient unit.



**Side ladder** for load inspection.



# Technical Data

## Body and Tailgate Versions

<b>Type length</b>	<b>M.KI 5.5</b>			
<b>Tailgate version</b>	Internal pendulum tailgate with chute also as hydraulic tailgate		External pendulum tailgate with surrounding seal also as hydraulic tailgate Central slider (option)	
<b>Volume</b>	18.1 m <sup>3</sup>		18.7 m <sup>3</sup>	
<b>Body height</b>	<b>1,460 mm</b>		<b>1,460 mm</b>	
<b>Body versions</b>	Floor	Side wall	Floor	Side wall
	6 mm	5 mm	6 mm	5 mm
	8 mm	5 mm	8 mm	5 mm

## One-Stop Solution

### Premium Services from Schmitz Cargobull

